

SILVER BELL ESTATES NO. 1

LOTS 28-40

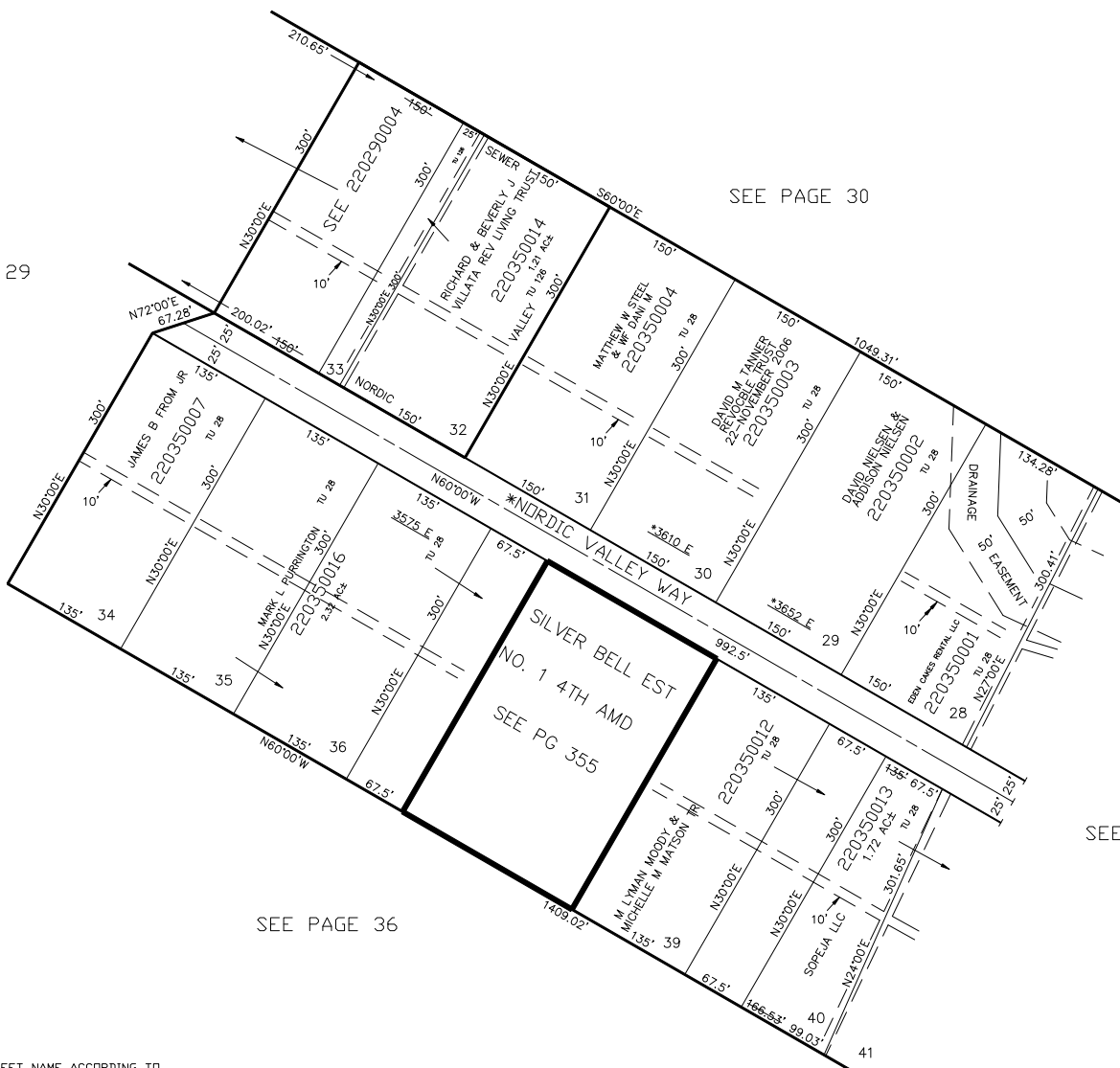
IN WEBER COUNTY

SCALE 1" = 100'

TAXING UNIT: 28, 126

SEE PAGE 30

SEE PAGE 29



SEE PAGE 34

SEE PAGE 36

*NOTE: STREET NAME ACCORDING TO
COUNTY SURVEYOR'S OFFICE.

FOR COMPLETE ENG DATA SEE
ORIGINAL DEDICATION PLAT IN
BOOK 12, PAGE 90 OF RECORDS.

ALL ROADS IN THIS SUBDIVISION
ARE OWNED BY WEBER COUNTY
SEE 22-032-0028

*ADDRESS AFFIDAVIT E#2956741, E#3332844

ALL UTILITY EASEMENTS ARE
10 FEET WIDE.
THE DRAINAGE EASEMENT
IS 100 FEET WIDE.

FOR TAX PURPOSES ONLY